

Centrepont Alliance 2023

George Walker – Head Of Investment Sales – CFS

30th May 2023

Advisor use only

Disclaimer

Adviser use only

This document provides general information for the adviser only and is not to be handed to any investor.

Information in this presentation is provided Colonial First State Investments Limited ABN 98 002 348 352, AFSL 232468 (CFSIL). It may include general advice but does not consider anyone's individual objectives, financial situation, needs or tax circumstances. You should read the Financial Services Guide (FSG) before making any recommendations to a client. This information is based on current requirements and laws as at the date of publication. Published as at 30/05/2023.

Agenda

Recent History

1. The QE era
2. A changing dynamic
3. The new world paradigm

Forward looking

4. Outlook for inflation
5. Outlook for liquidity
6. A change from QE to QT
7. Banking crisis
8. Bankruptcies
9. Macro views by region
10. Public and private markets

The post-GFC Quantitative Easing era

- The 'QE era' has been marked by artificially low interest rates
- Many asset returns largely driven by monetary environment
- Compounded by the monetary response to COVID

A rising tide lifts all boats

- Active management has struggled to add value



Recent History

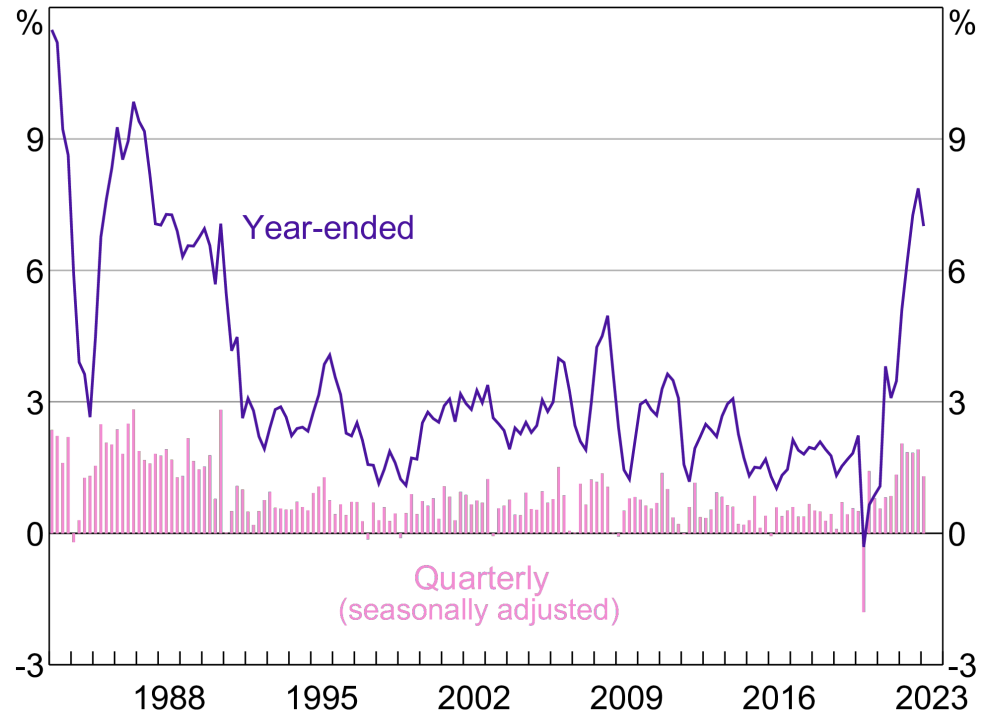
A change in the dynamic

- Supply restricted by COVID related supply chain issues
- Robust demand driven by loose fiscal and monetary policy
- Land war in Europe – energy and food shortages

The return of inflation

...it wasn't transitory

Consumer Price Inflation*



* Excludes interest charges prior to the September quarter 1998; adjusted for the tax changes of 1999–2000.

Sources: ABS; RBA

Monetary U-Turn heralds in a new world paradigm

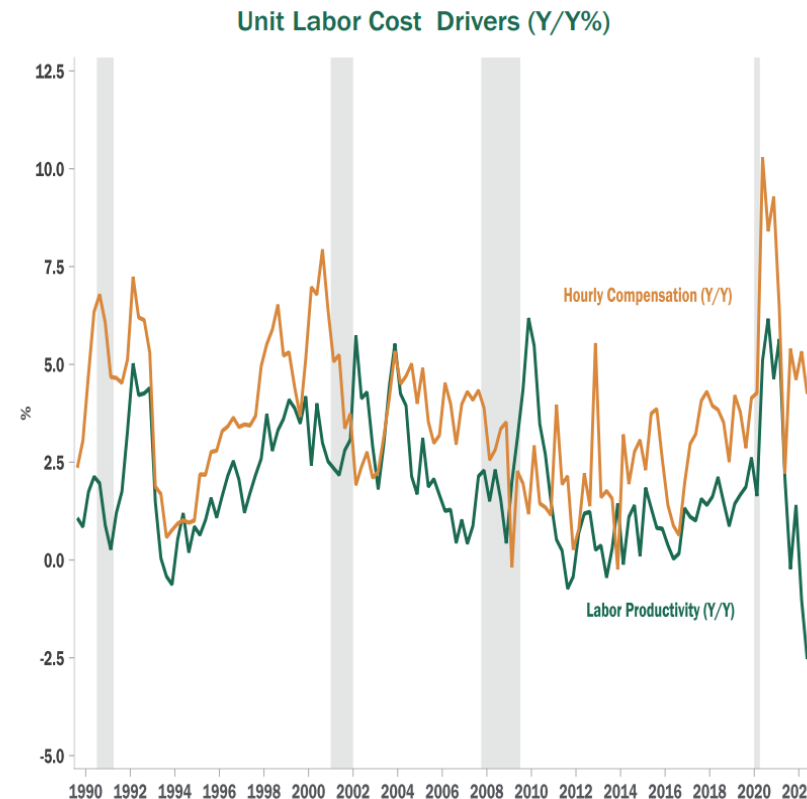
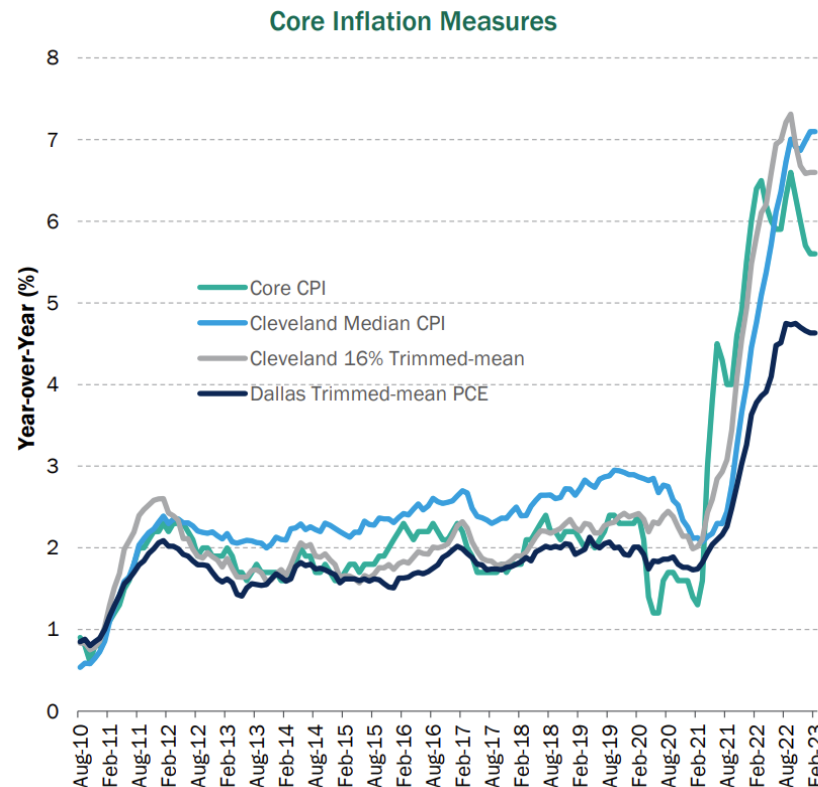
- The era of 'free money' is over
- Uncertainty is rife – geopolitical, economic and monetary

Investors must adapt to the new environment

- Allocation decisions are crucial
- Traditional portfolio structure did not work in 2022
- Alternatives have been underrepresented

Outlook: Inflation – moving to a higher inflation regime

1. **On-shoring / near-shoring:** Pressures seen during COVID have eased, however near-shoring will be inflationary in the longer term
2. **Tight labour markets:** Seeing a factor shift from capital to labour. Strength in wages likely to keep inflation higher for the next 12-18 months
3. **Clean Energy transition:** Large capex spend required to finance this which will be inflationary
4. **War/defence spending:** There will be substantial costs involved to rebuild Ukraine. Geopolitical tensions also increase the need for greater defence spending



Source: PineBridge, 2023

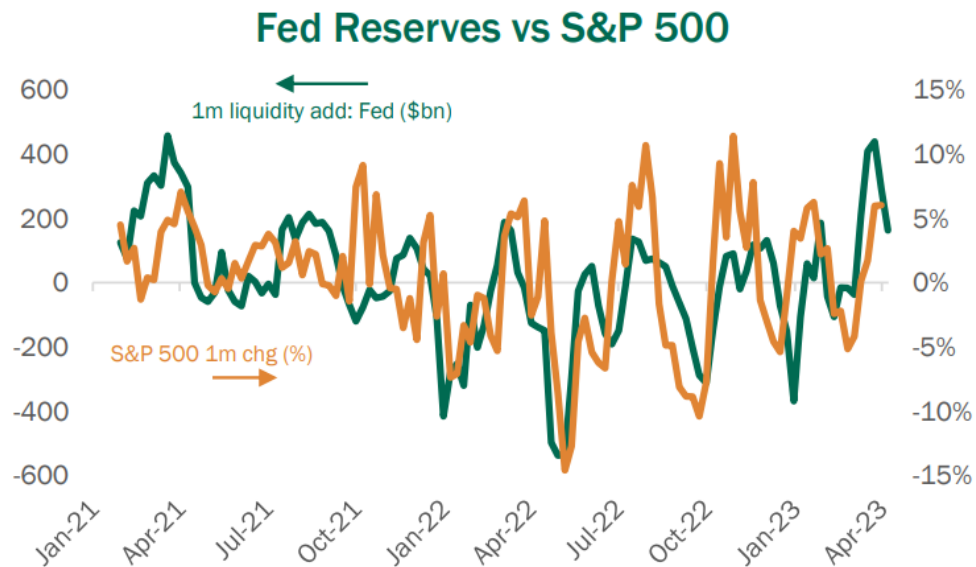
Outlook: Liquidity

- Agreement amongst most investors that liquidity has declined
- Current environment also gives rise to the risk of a significant liquidation event
- Primary victims of a liquidation event would be crowded equity market names and illiquid asset holders
- Managers seeing a slowdown in capital recycling activities
- Some institutional investors are very cautious – holding record amounts of cash (up to 10-15%)
- Discussion that some US defined benefit plans are effectively leveraging up to meet liquidity requirements

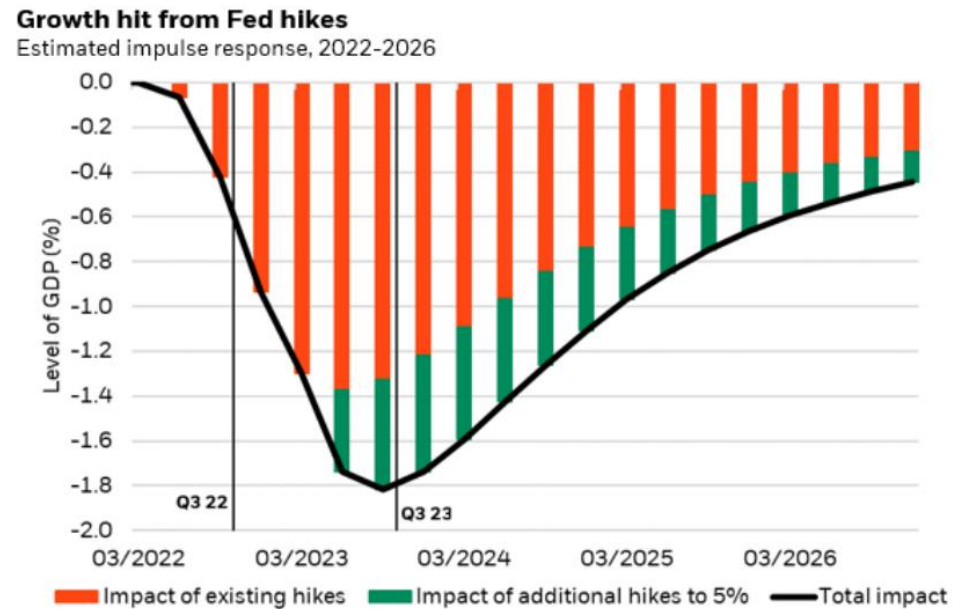


Broader macro views – system change from QE to QT

- Central bank liquidity has been a key driver of markets – what happens when the Central Bank 'put' is no longer available?
- Recession typically comes 13 months after the last rate hike
- Expectation is for future cycles to be shorter and sharper – more rates, currency and other market volatility



Source: PineBridge, 2023

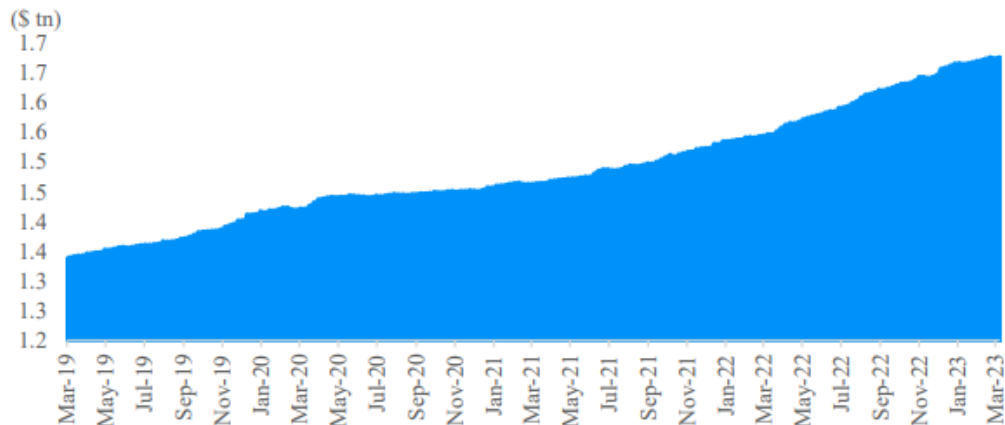


Source: BlackRock Investment Institute, Institute for Monetary and Financial Stability, Goethe University Frankfurt, December 2022.

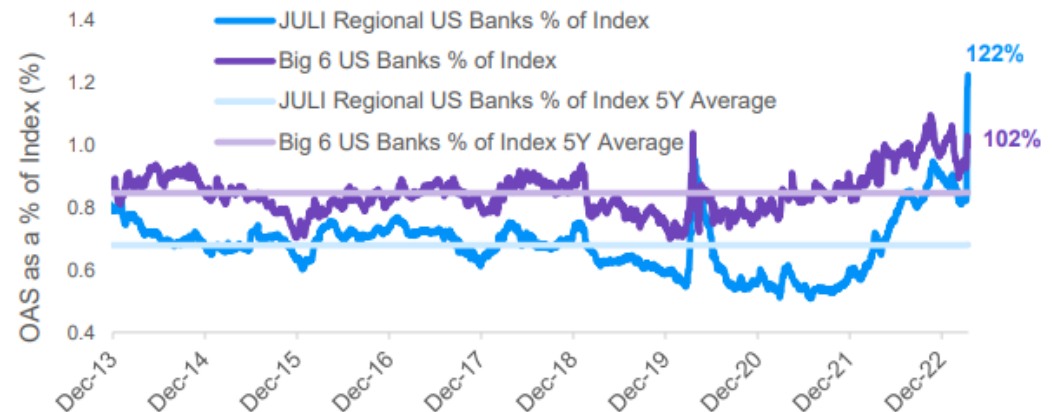
Outlook: Banking Crisis

- Banking concerns more contained to the US than Europe given exposure to regional banks
- In the US, falling bank reserves will continue to tighten credit conditions
- Some views that most regional banks will disappear – many are insolvent unless rates go down and they have high exposure to Commercial Real estate
- Regulatory capital relief likely to be a crucial part of the go-forward proposition, but the US Fed has a lot on its plate!

3) Asset Quality: Average CRE exposure as a percentage of loan mix (as of 4Q22) is ~20% for *mid-sized regional banks



Relative value of regional banks is reflecting the increased risk



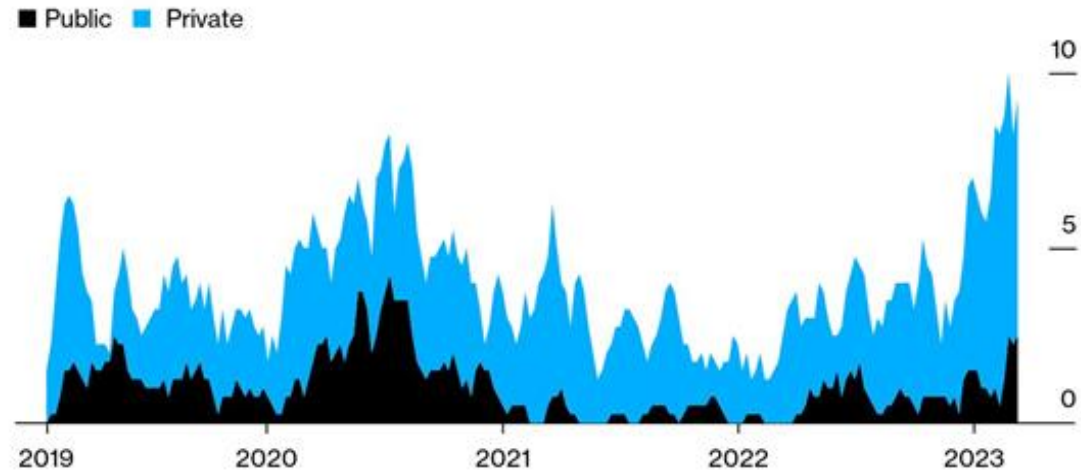
Source: JP Morgan, 2023

Broader macro views – bankruptcies

- Bankruptcies are beginning to spike as the cost of debt bites
- Some of the 'zombie companies' drowning under onerous debt loads, but not all
- Sunday 14 May 2023: Seven large companies file for bankruptcy - without precedent in 15 years of data being tracked by Bloomberg

Bankruptcies Spike Among Small, Private Companies

Average number of companies filing for bankruptcy each week



Source: UBS Group AG

Note: Four-week moving average of consolidated bankruptcy data of US companies with assets of \$10 million or more

Bloomberg

48-Hour Flurry

Seven companies filed for bankruptcy in a two-day span this week

Company	Assets	Liabilities	Description
Athenex	\$100M - \$500M	\$100M - \$500M	Biopharma
Cox Operating	\$100M - \$500M	\$100M - \$500M	Energy
Envision Healthcare	\$1B - \$10B	\$1B - \$10B	Physician staffing
Kidde-Fenwal	\$100M - \$500M	\$1B - \$10B	Fire protection
Monitronics International	\$1B - \$10B	\$1B - \$10B	Security systems
Venator Materials	\$1B - \$10B	\$1B - \$10B	Chemicals
Vice Media	\$500M - \$1B	\$500M - \$1B	Media

Source: Chapter 11 petitions

Note: Asset, liability ranges are estimates

Bloomberg

Learning outcomes

Recent History

QE and the impact on financial markets

Macroeconomic drivers of inflation in 2021/2022

Global monetary response

Outlook

Inflation

Liquidity

QT

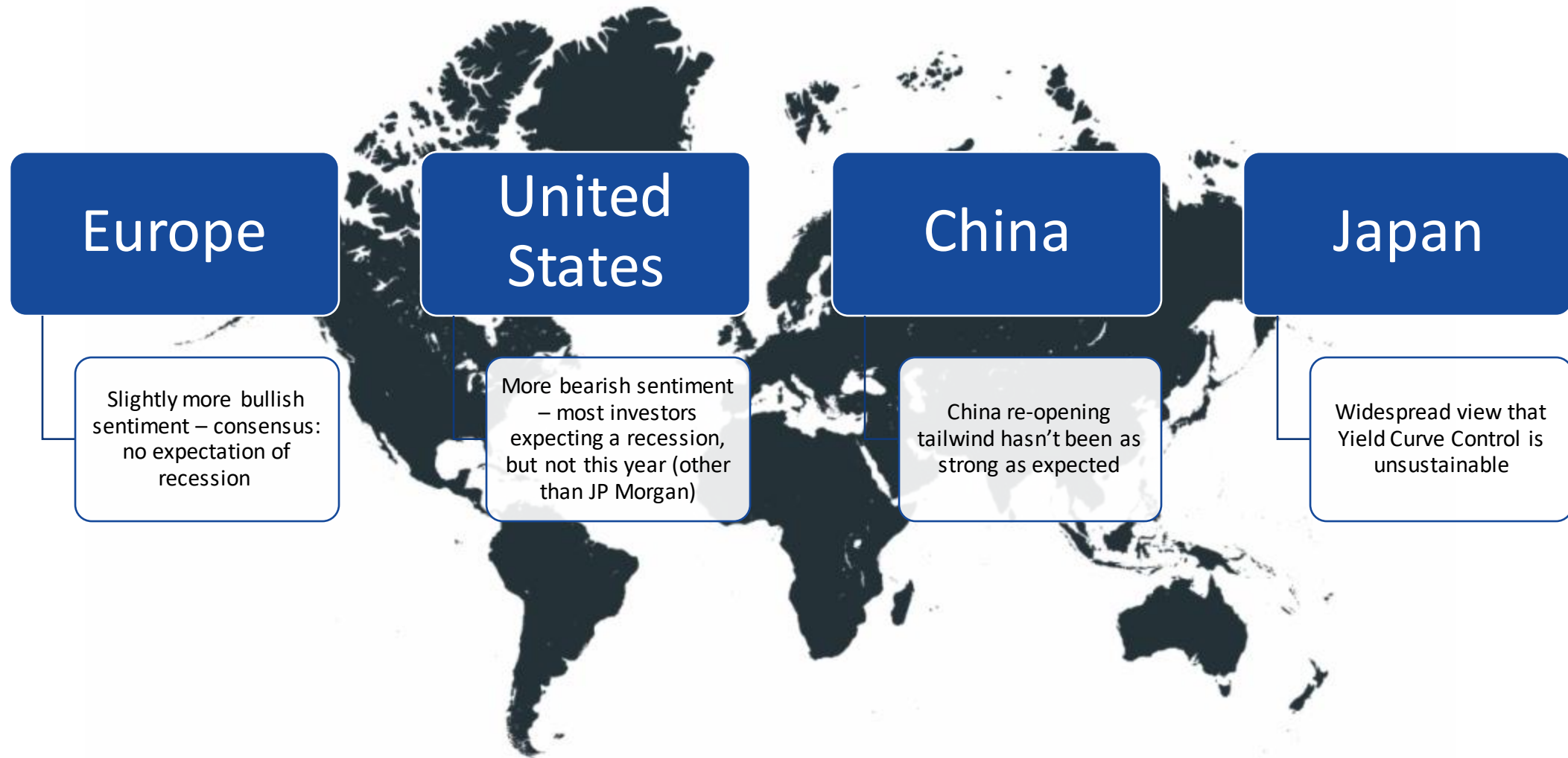
Banking crisis

SME bankruptcies

View by region

Public and private markets

Macro views by region



Public and private markets

PUBLIC EQUITY

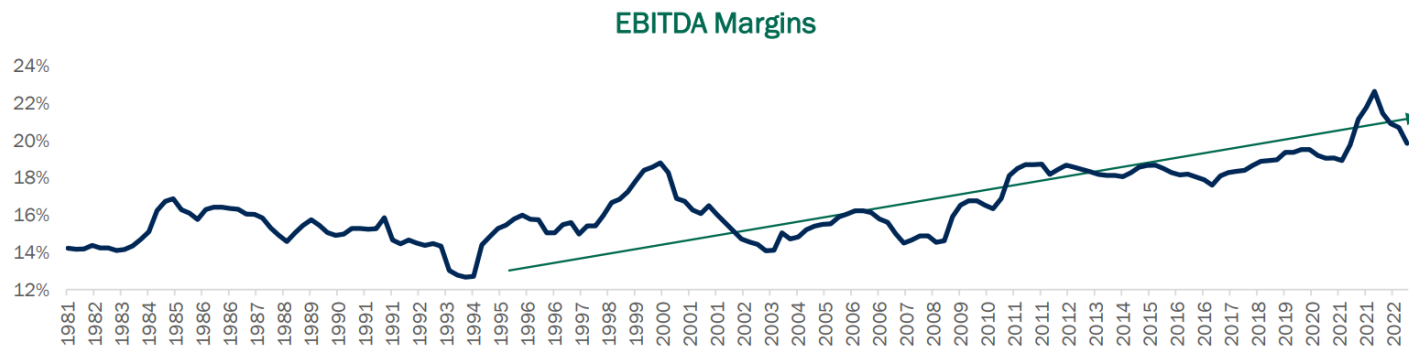
- **Expecting headwinds:** increased volatility in earnings and rates
- **Margin pressure:** developed market EBITDA margins which have benefitted from low rates, secular growth and globalisation are now under potential pressure

PRIVATE EQUITY

- **M&A:** A lot of strategic transactions – carve outs and add-ons. More take-privates and buy and builds
- **Exits:** Public markets better in the US than Europe, but options very limited. Continuation vehicles viable but limited by number per fund due to concentration limits

PRIVATE CREDIT

- **Better terms:** Documentation and terms have become more lender friendly (e.g. stronger covenants and call protection)
- **Strong illiquidity premium:** structural factors means this premium is unlikely to be eroded in the current environment



Source: PineBridge, 2023